



Brant Lake Project Week 5 Summary

Crew Leader: Kyle Jaquis

Crew: Doug Russo, Chris Burnham

Safety: No issues

Operations:

Monday: Started off taking some photo and video of the native milfoil on the north side of the bridge. The plants were plentiful but were brown and weak. It seemed as though they were dying off for winter. Moved to swim Sunset Cove and the rocky shoal that runs parallel to shore. 1/2 of a bag was harvested from the shoal. Continued north up the eastern shore finding another 1/2 of a bag mostly from a patch just north of sunset cove. (Next to white boathouse)

Tuesday: Continued heading north up the eastern shore and into the northernmost bay. A band of milfoil was found at the tip of the bay in the swampy area. 4 Bags were harvested from this area.

Wednesday: Started a cleanup swim of the patches in the northernmost bay finding another 40 plants. Headed south on the eastern shore of the bay a few patches were found that produced 1 bag. Continuing south a bed of milfoil was discovered from the surface. The bed was on its own rock-pile, separate from the regular littoral zone. Up until now, this area was unknown to AIM and for good reason. The rock-pile rises up on its own away from the normal littoral zone drop-off and the plant growth was low enough to be difficult to see unless in ideal conditions. Plants were old and very dense. 10 bags were harvested. (This area should be a top priority for next season.)

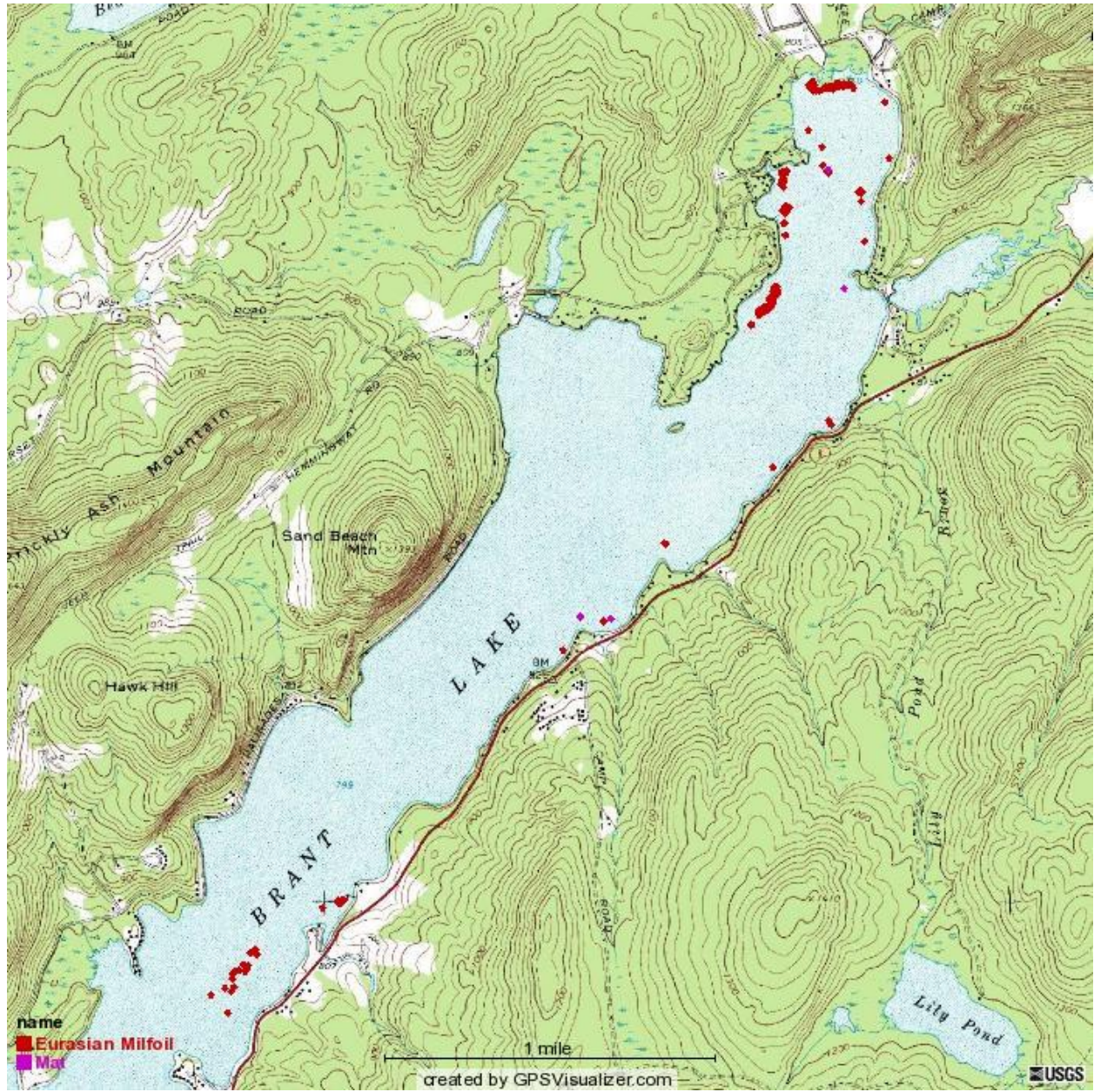
Thursday: Spent the day on the new patches. 15 bags were harvested in this area. Plants were not very tall but were very dense and fragmenting very easily. Extra care needed to be taken as to not spread the fragments. Root balls were also tough to remove due to the rocky bottom structure.

Weekly Bag Count: 30 bags 750 lbs

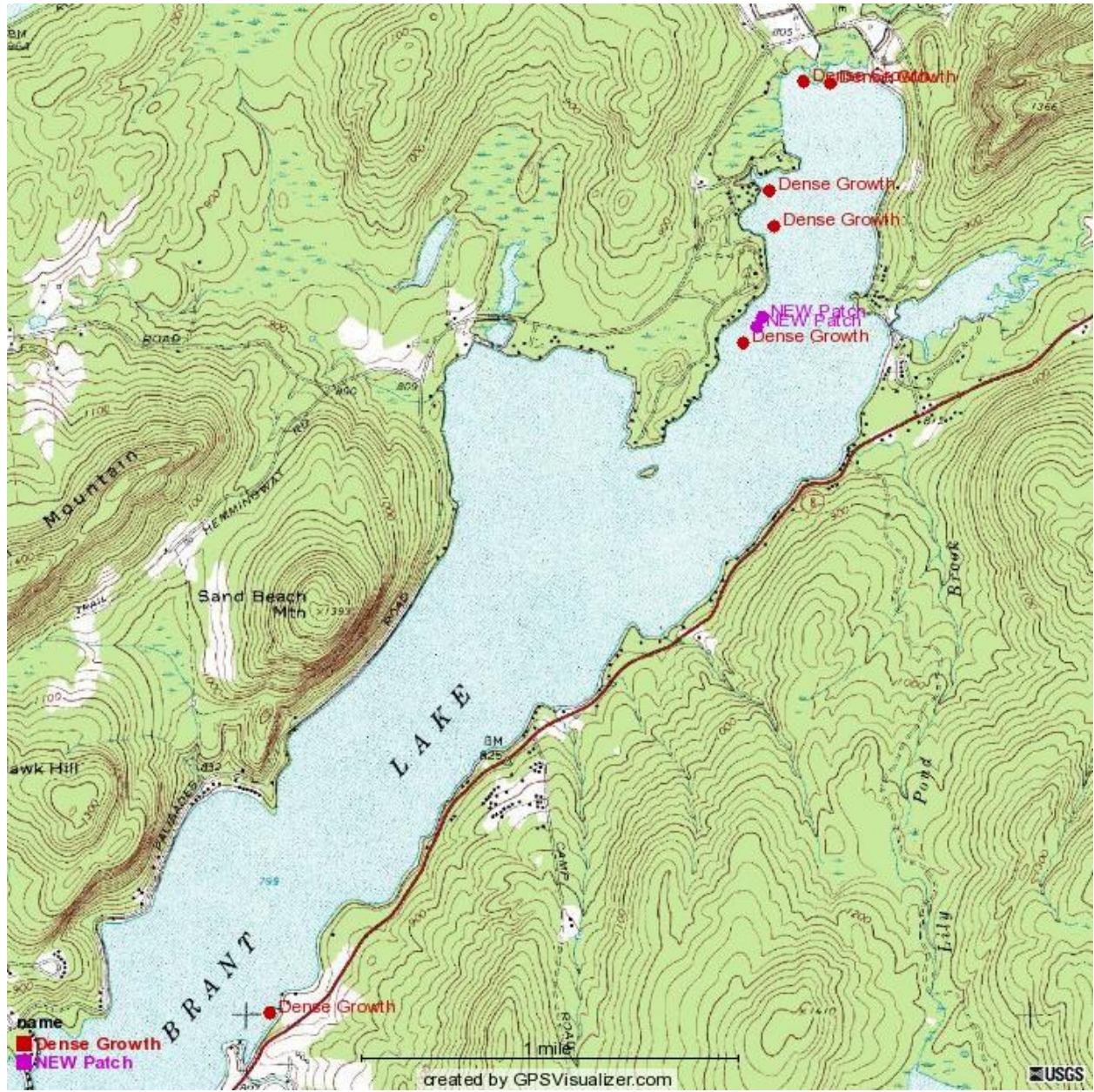
Recommendations:

The new bed discovery is now a top priority for harvesting next spring. In addition the West shore will need immediate attention since the dive crew was stopped in its normal circuit of the lake before completing Big Rock Cove and Western shore swims south of there. While the abnormally large bag count is alarming it is all due to one individual spot and is not indicative of us losing ground or losing control of the problem. The discovery of this bed does explain why so much consistent re-growth was being found in the North end, due to the fragmentation of this dense area.

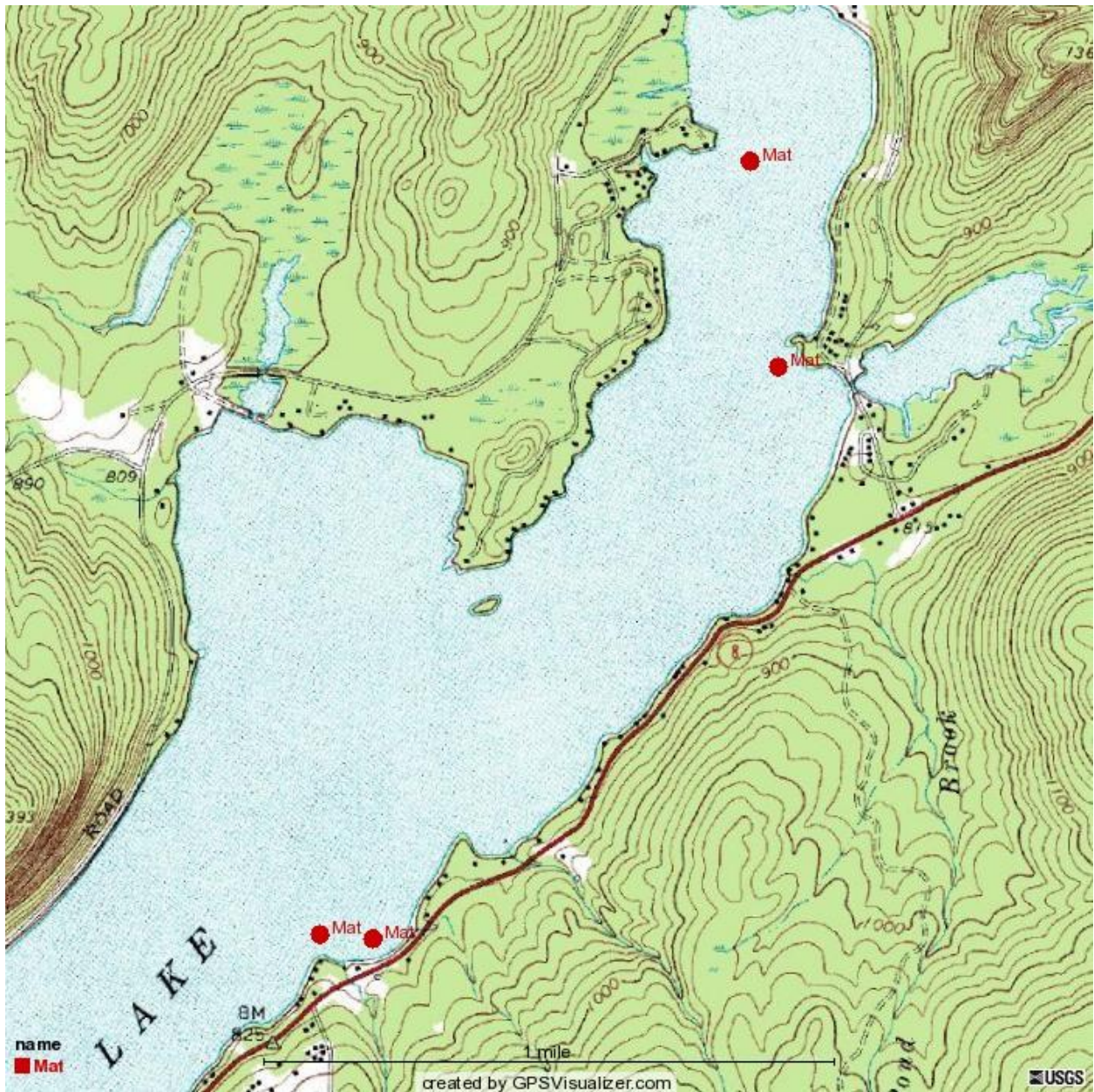
Lakewide Milfoil Harvest Map



New and Dense Growth Areas



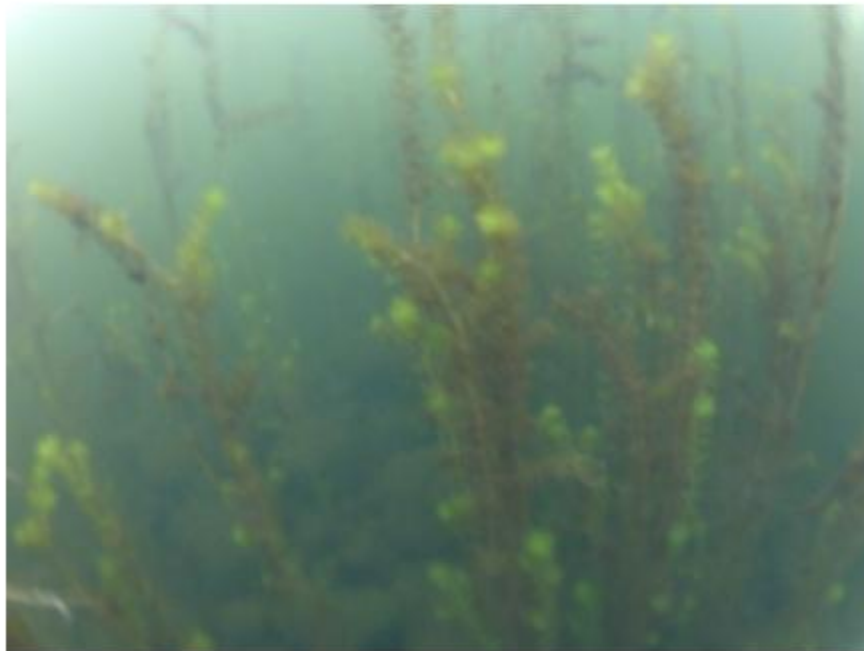
Leftover Mat Locations (More areas still have mats, but our GPS accidentally deleted a number of these waypoints, we will re-collect this information next Spring)



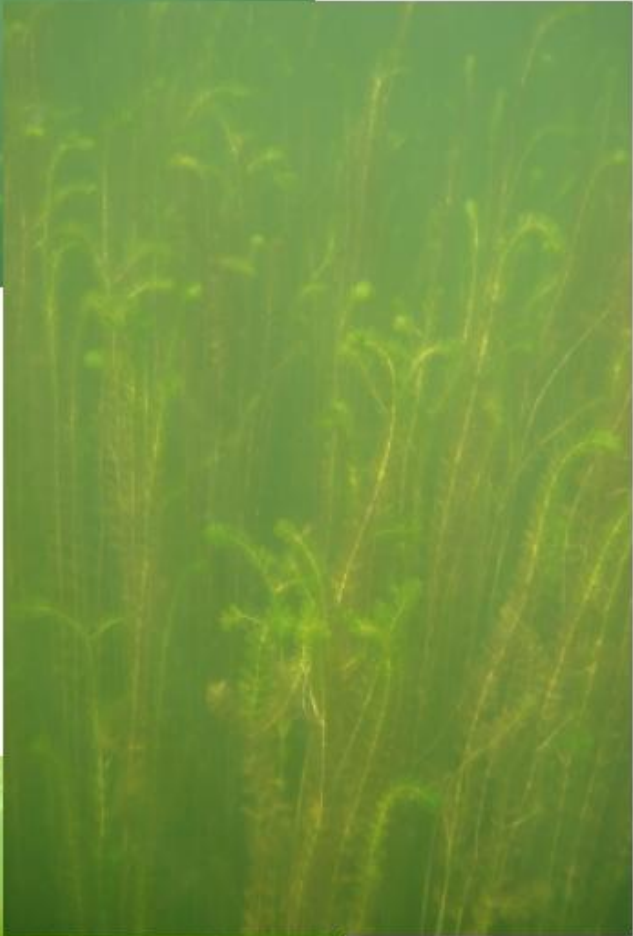
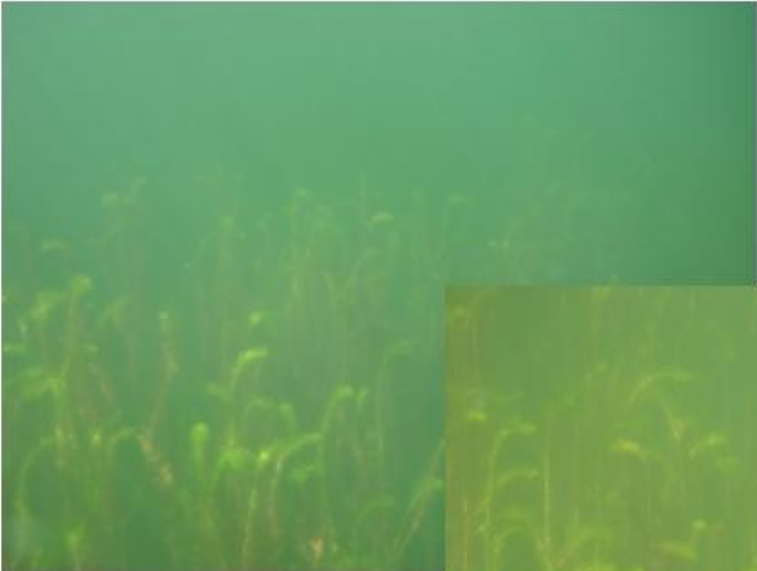
Native Plant Growth East of the bridge in the North End



New Eurasian Milfoil growth located and harvested in the North End



Sunset Cove 2008



Sunset Cove 2012 (only picture with milfoil present is the top photo, bottom photo shows native growth)

