



Chateaugay Lakes invasive plant control project

Work Summary: Week 1 (June 4th – 8th) 2012

Monday

The crew swam South of the Boat Launch on the East side picking heavily. The plants were 4-6 feet tall with 6-12 stems on average. Picked 31 bags.

Then the West shore was hit where similar densities and plant sizes were found. 22 bags were harvested here.

Tuesday

The crew swam the Southwest shore of the Boat Launch and removed 11 bags. Moved to the patch Northwest of the Boat Launch on the Western shore and found small (6-18" tall) milfoil plants in large quantity that which yielded 5 bags.

Moved South to the North side of the Sandbar. Plants were 5-7' tall and dense. 47 bags were harvested.

Wednesday

Began the day by swimming the Boat Launch area. Picked heavily, plants ranged from small 4" tall single stems to 5' tall multistem growth. Also line swam the South side of the Boat Launch bay. Harvested 36 bags.

Thursday

Started by picking the patch North of the Boat Launch from the shore to the channel. There many plants but they were all small (1' or less) and single stems. 11 bags were pulled. Finished line swimming the North side of the Boat Launch bay and pulled 9 bags.

Weekly Bag total: 172 bags 4,300 pounds

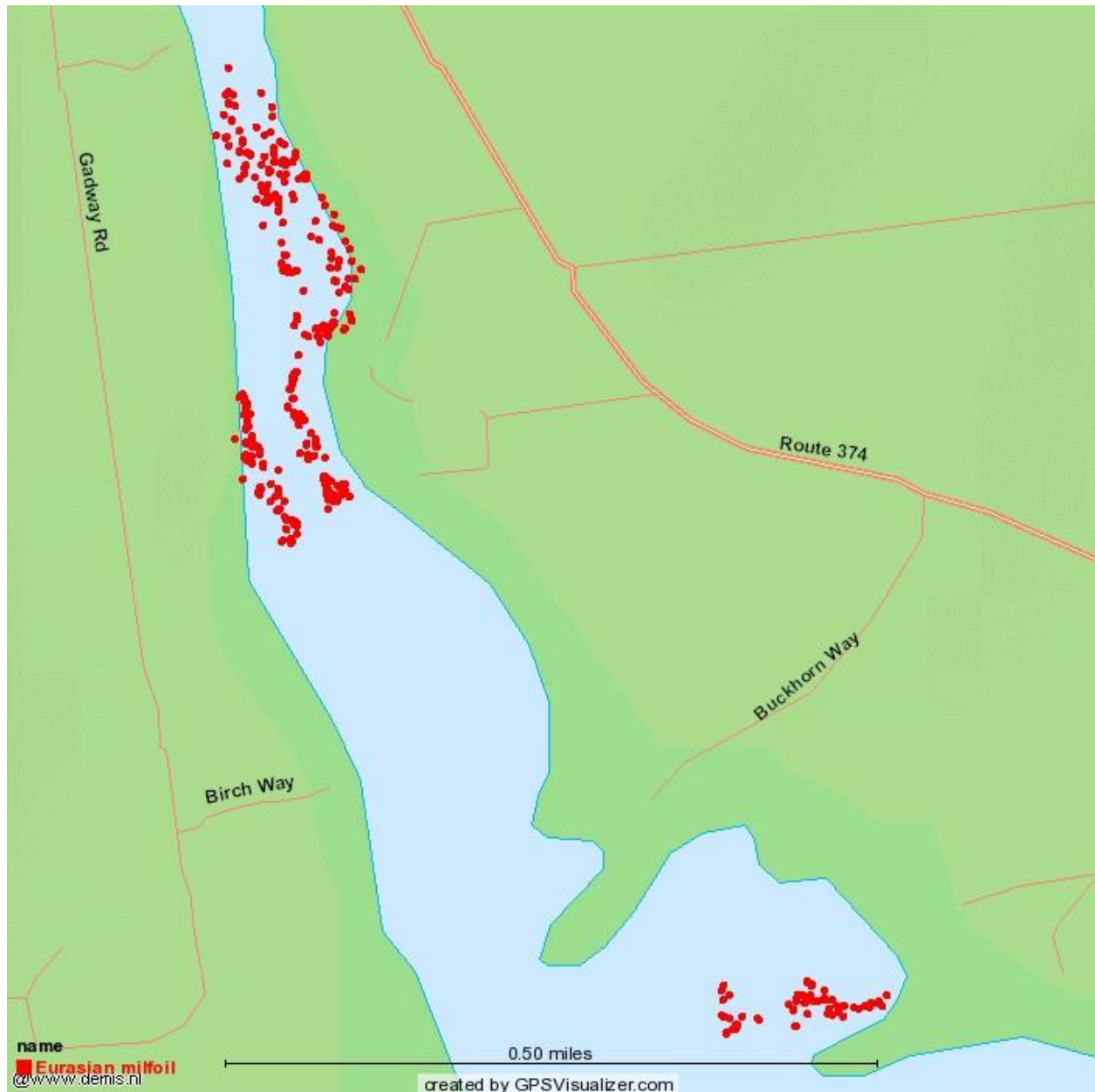
Maps

An interactive Google Maps version of the following data is available at the following link:

http://www.milfoilremoval.com/Maps/chat_wk1_2012.html

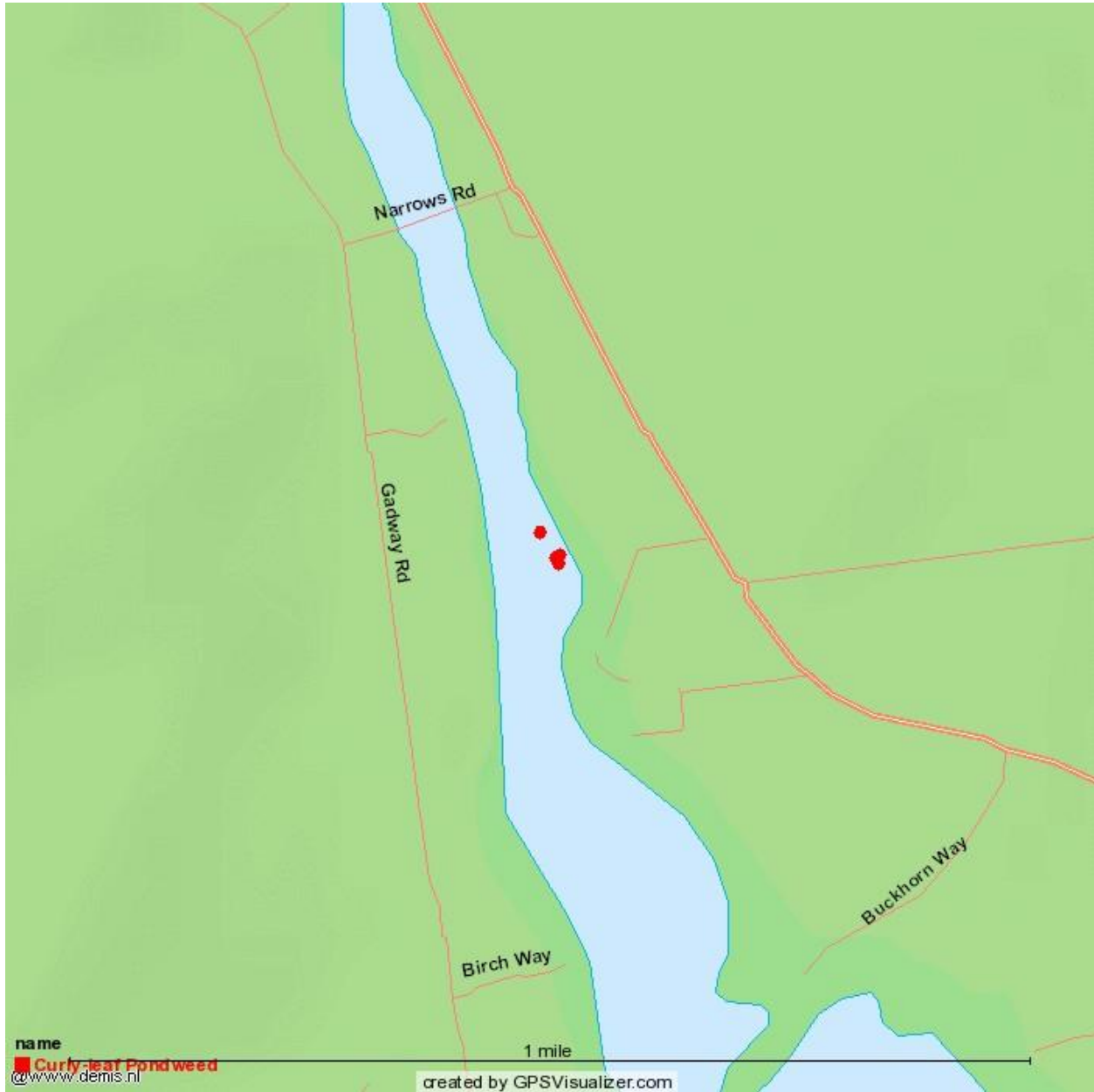
This online map has satellite imagery background and can be zoomed and panned for a better view of the data.

Eurasian Milfoil Harvest Map



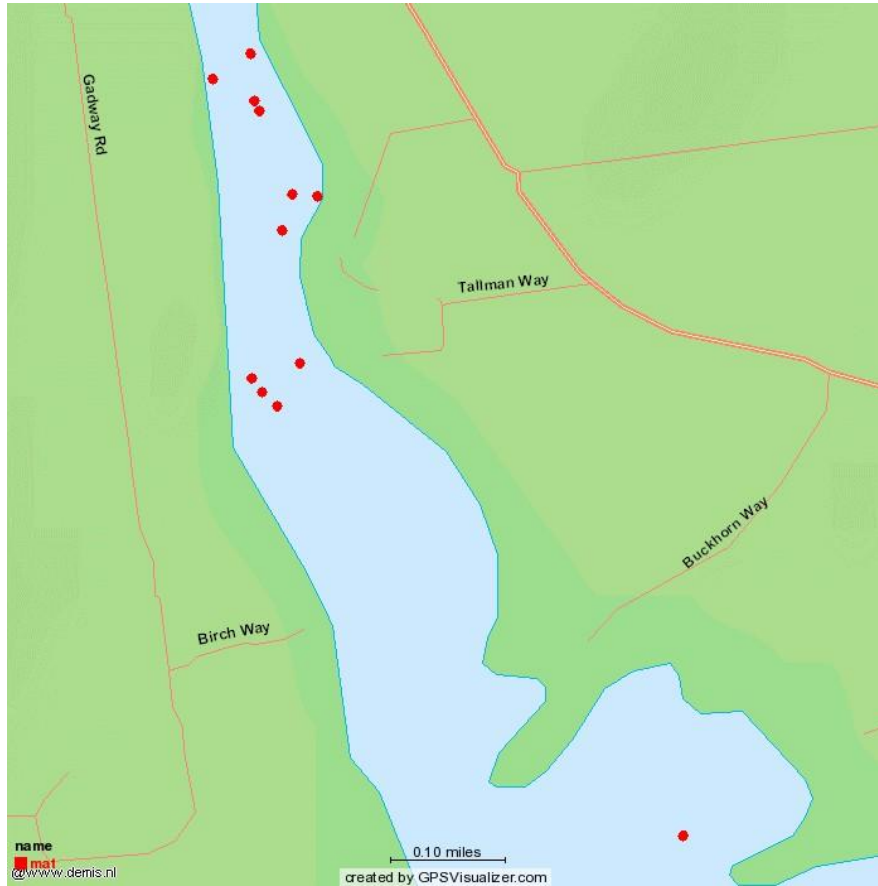
Curly-Leaf Pondweed Harvest Map

The crew found and removed roughly 100 Curly-leaf Pondweed plants in the Boat Launch area. Their locations are shown below.



Week 1: Benthic mat locations map and coordinates

Below is a map of the waypoints indicating benthic mats found while conducting hand harvesting during the week of June 4th, 2012.



These are the actual coordinates of the mat locations.

name	date	lat	long
mat	04-JUN-12 9:09:43AM	44.77166	-73.9807
mat	05-JUN-12 9:22:28AM	44.77112	-73.9811
mat	04-JUN-12 11:47:35AM	44.7713	-73.9814
mat	06-JUN-12 10:39:46AM	44.77379	-73.9808
mat	07-JUN-12 9:42:52AM	44.77484	-73.9814
mat	07-JUN-12 9:44:41AM	44.77484	-73.9814
mat	07-JUN-12 11:52:49AM	44.77557	-73.9816
mat	04-JUN-12 11:55:59AM	44.77147	-73.9816
mat	05-JUN-12 11:46:17AM	44.77525	-73.9823
mat	05-JUN-12 11:52:03AM	44.77497	-73.9815
mat	05-JUN-12 2:10:28PM	44.76571	-73.9739
mat	06-JUN-12 9:13:57AM	44.77334	-73.981
mat	06-JUN-12 10:36:11AM	44.77377	-73.9804