



Chateaugay Lakes invasive plant control project

Work Summary: Week 1 (June 10th – 13th) 2013

Monday

Started the week diving the north entrance of the boat launch beds harvesting 40 bags. A small amount of Curly Leaf Pondweed was found mixed in with the milfoil. Although conditions were very murky the area seemed to be in better shape than past years. Plants are becoming more and more sporadic. Further maintenance will be necessary to prevent it from becoming a problem area again.

Tuesday

Continued working the boat launch area with a focus on the south entrance area. On this side we harvested another 35 bags. The same goes for this area as the north area. Plants are more sporadic than past years and the area will need to be maintained.

Wednesday

Swam the western side of the narrows across from the boat launch known as transect areas 1 and 2 on the map. In this area 48 bags were harvested mostly in a dense patch just north of the girl's camp.

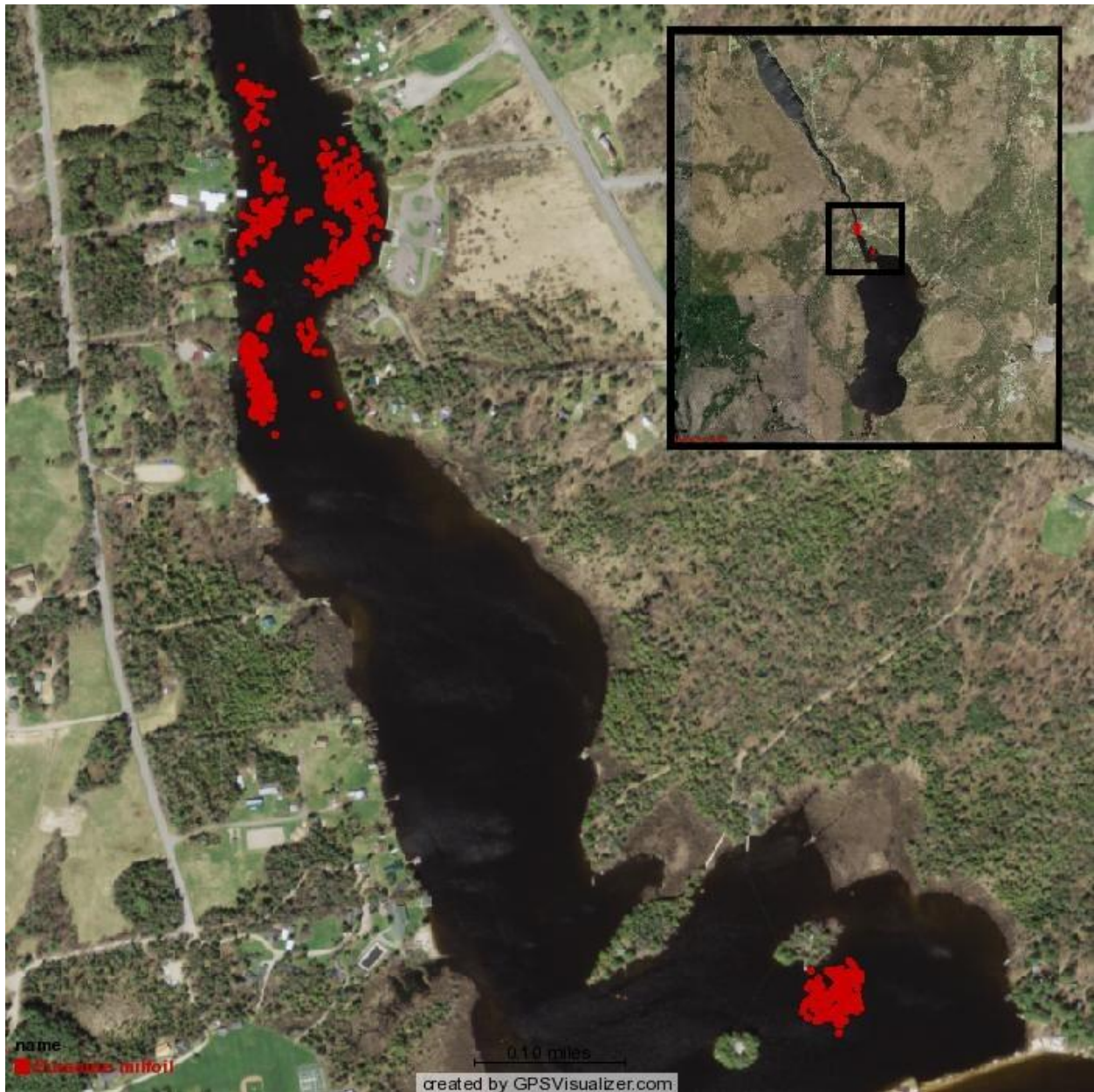
Thursday

Did a cleanup swim of the western side of the narrows that was worked the day before. After the area was determined to be in good shape we moved to the eastern shore just south of the boat launch. Between the two areas 14 bags were harvested. In the afternoon we moved to the sandbar area. Here, extremely dense beds of milfoil were swam. In a short time at the end of the day 31 bags were pulled from the area. This site should be a priority for the following week.

Weekly Bag total: 167 bags 4,175 pounds

Maps

Eurasian Milfoil Harvest Map



Week 1: Benthic mat locations map and coordinates

Below is a map of the waypoints indicating benthic mats found while conducting hand harvesting during the week of June 10th, 2013.



These are the actual coordinates of the mat locations.

name	date	lat	long
MAT	6/10/2013 12:55	44.77389	-73.9806
MAT	6/13/2013 11:22	44.7735	-73.9812