



Chateaugay Lakes invasive plant control project

Work Summary: Week 2 (June 17th – 20th) 2013

Monday

Started working the bay between the inner island and sandbar. Here a few dense beds were found and harvested. 60 bags were pulled. Area will need clean up swim in the future.

Tuesday

Continued working the dense beds in the sandbar area, Harvesting another 62 bags from the area. Plants ranged from young single stems to sixteen stemmed dense old growth plants.

Wednesday

Continued working the sand bar beds with a focus on cleaning up the areas that were harvested the previous two days. Area was looking better with 39 bags removed. Most of which were scattered plants that were missed due to poor visibility.

Thursday

Moved to the outer edge of the bay toward the boating lane where we found the milfoil to be scattered in places and dense in others. By swimming around the area we determined that near the outer island had been worked in the past. 42 ½ bags were harvested from the area. This should be a priority for next year.

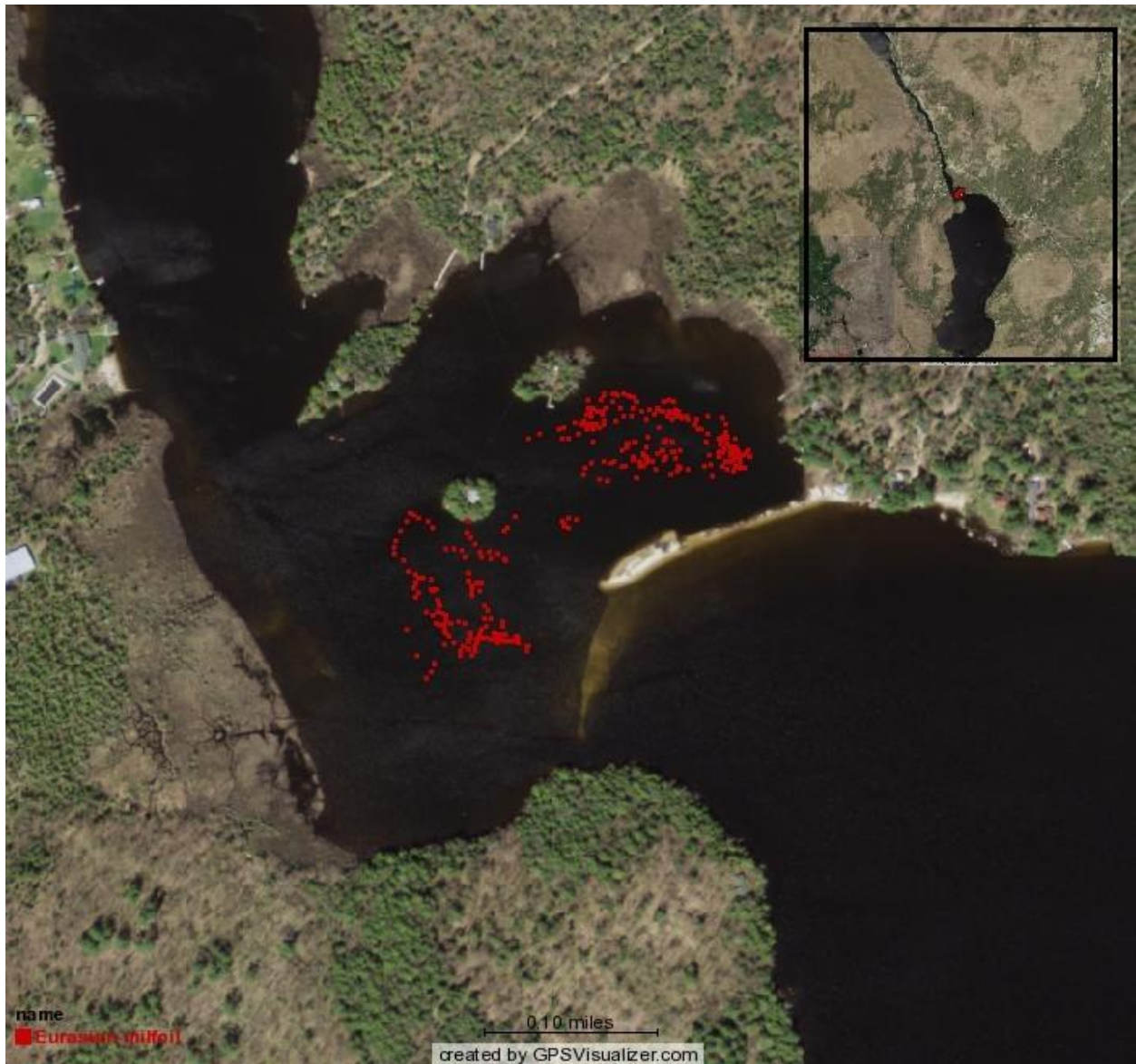
Recommendations

The sand bar area is starting to look much better, however I believe that it should be swam first thing next year to prevent new growth. The area I would recommend starting would be just north east of the channel were we left of picking a very dense bed of old growth milfoil.

Weekly Bag total: 203.5 bags 5,087.5 pounds

Maps

Eurasian Milfoil Harvest Map



Week 2: Benthic mat locations map and coordinates

Below is a map of the waypoints indicating benthic mats found while conducting hand harvesting during the week of June 17th, 2013.



These are the actual coordinates of the mat locations.

<u>name</u>	<u>date</u>	<u>lat</u>	<u>long</u>
MAT	6/17/2013 13:14	44.76594	-73.97332
MAT	6/20/2013 9:14	44.76523	-73.97595
MAT	6/20/2013 10:06	44.76524	-73.97602
MAT	6/20/2013 12:30	44.7656	-73.97537